



ELITE 150-S ***ELITE 150-INT***
ELITE 200-S ***ELITE 200-INT***
ELITE 220-S ***ELITE 220-INT***

Instruction Manual



HONYA CO., LTD
www.reefoctopus.com



Dear Customer

Thank you for choosing OCTO, a quality product manufactured by HONYA CO., LTD. In order for you to safely use our product for optimum results, please read the instruction prior to use. We would strongly suggest that you retain this Instruction for future reference.

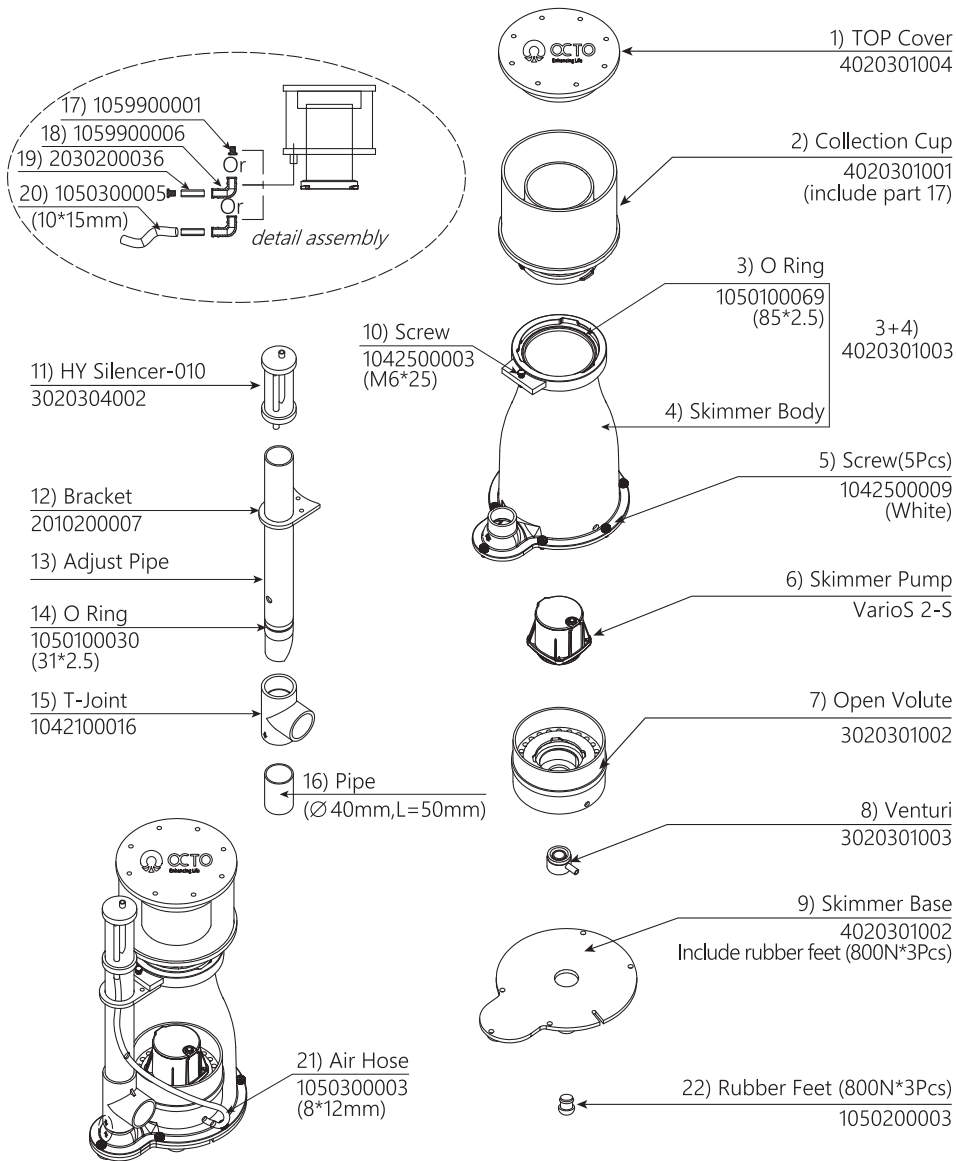
Elite Space Saving Skimmer

Item No.	Product	Wet/Dry	Pump Power	Cup Diameter		Neck Diameter		Footprint				Height		Output Size	Tank Volume	
				mm	inch	mm	inch	mm	inch	mm	inch	mm	inch		L	US Gal
120301	Elite 150-S	Wet	25	150	5.9	80	3.2	265	195	10.4	7.7	535	21.1	Φ 40 mm (1-1/4")	800	211
120302	Elite 200-S	Wet	40	200	7.9	120	4.7	325	255	12.8	10.0	600	23.6	Φ 50 mm (1-1/2")	1500	396
120303	Elite 220-S	Wet	70	220	8.7	120	4.7	345	285	13.6	11.2	640	25.2	Φ 50 mm (1-1/2")	2000	528

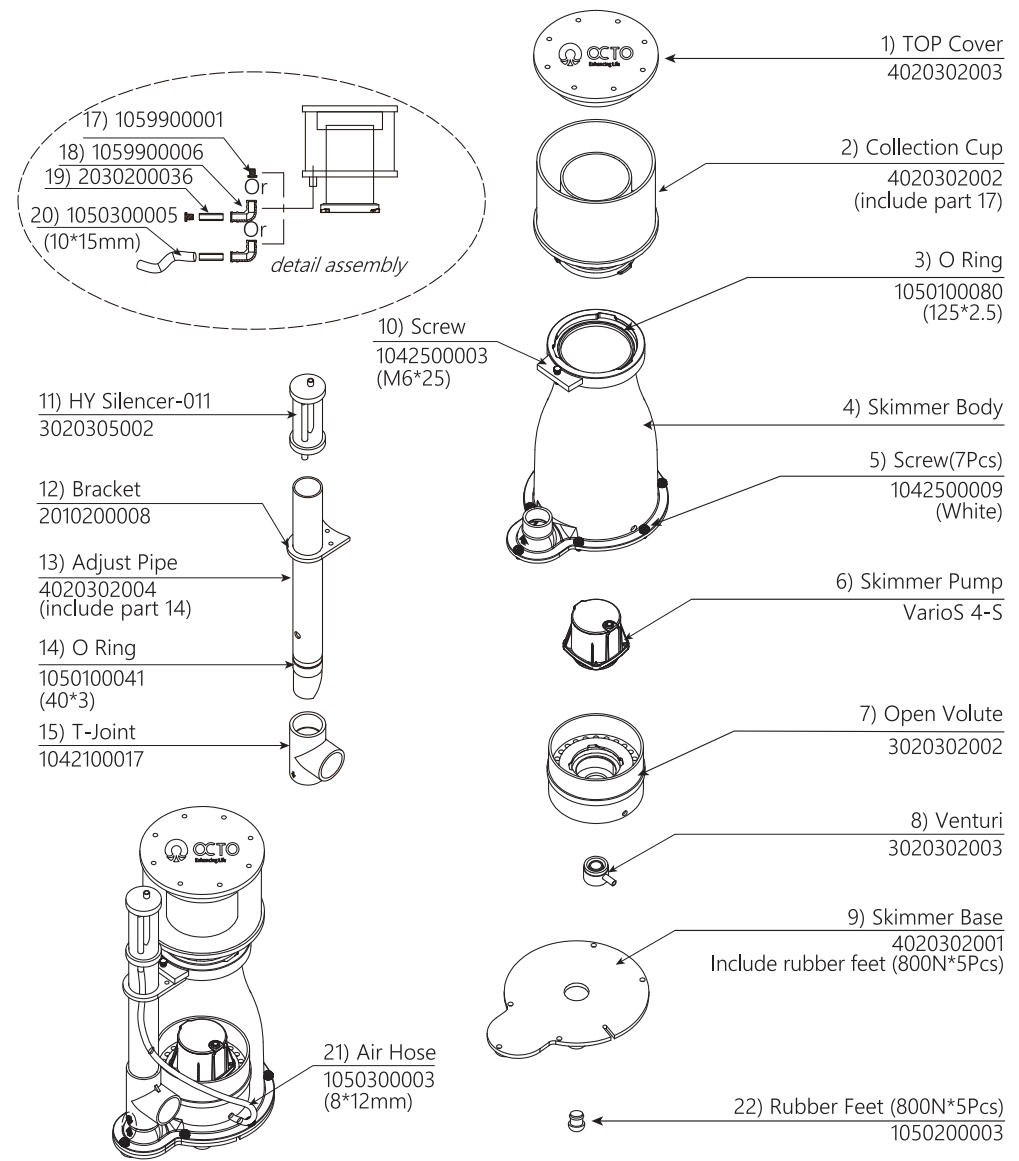
Elite Internal Skimmer

Item No.	Product	Wet/Dry	Pump Power	Cup Diameter		Neck Diameter		Footprint				Height		Output Size	Tank Volume	
				mm	inch	mm	inch	mm	inch	mm	inch	mm	inch		L	US Gal
120304	Elite 150-INT	Wet	25	150	5.9	80	3.2	290	265	11.4	10.4	525	20.7	Φ 40 mm (1-1/4")	800	211
120305	Elite 200-INT	Wet	40	200	7.9	120	4.7	380	285	15.0	11.2	590	23.2	Φ 50 mm (1-1/2")	1500	396
120306	Elite 220-INT	Wet	70	220	8.7	120	4.7	420	310	16.5	12.2	630	24.8	Φ 50 mm (1-1/2")	2000	528

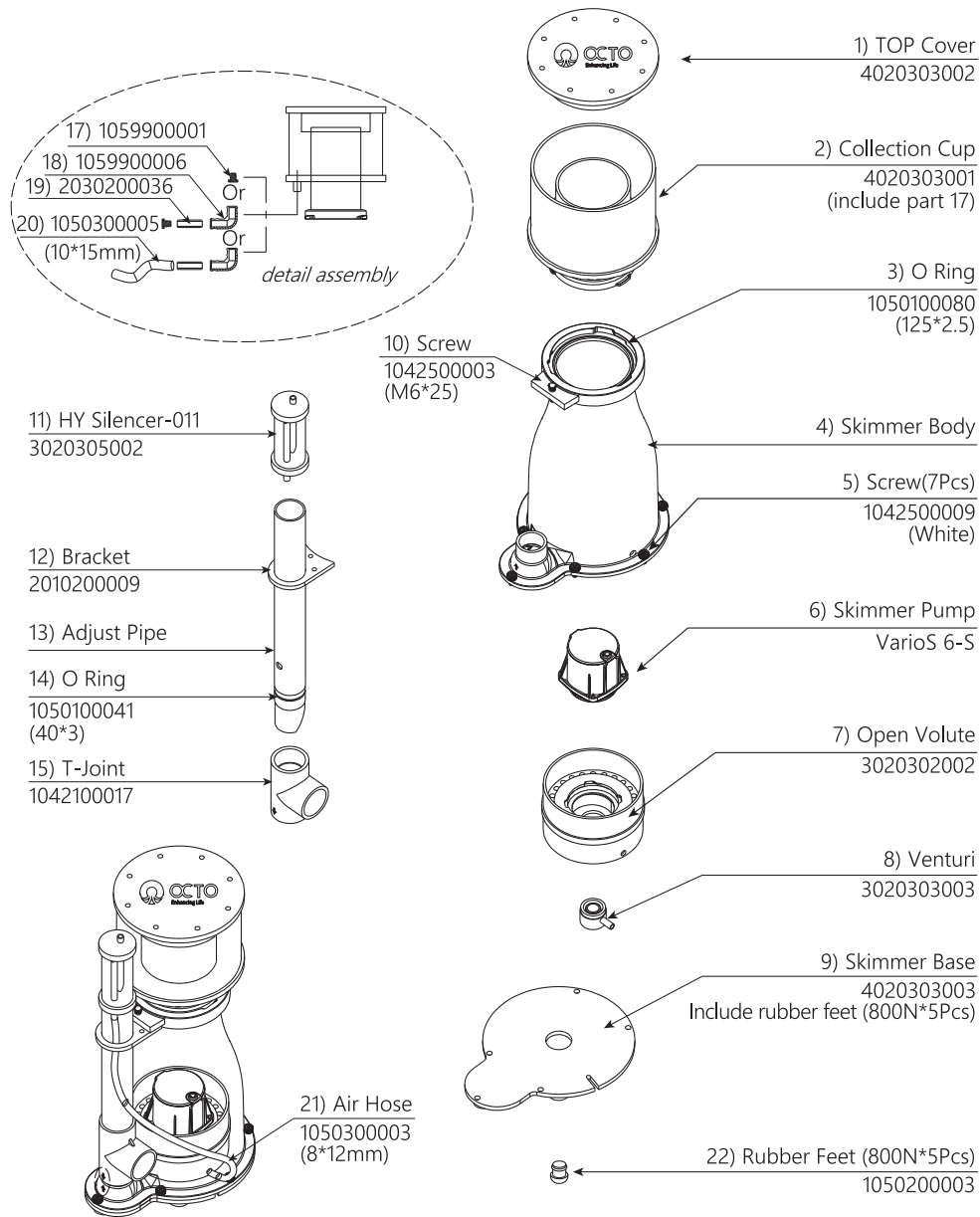
Explosion Chart for Elite 150-S



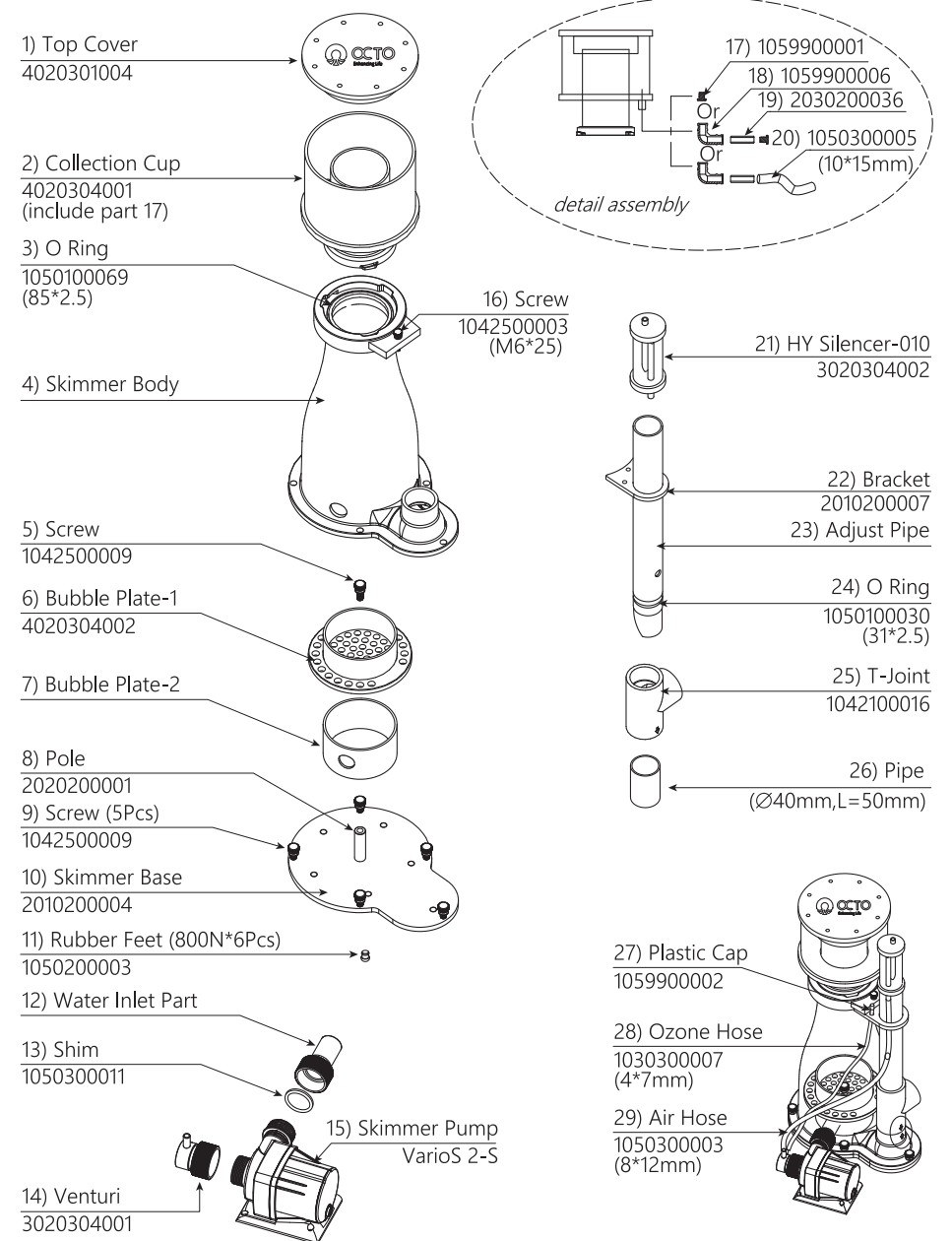
Explosion Chart for Elite 200-S



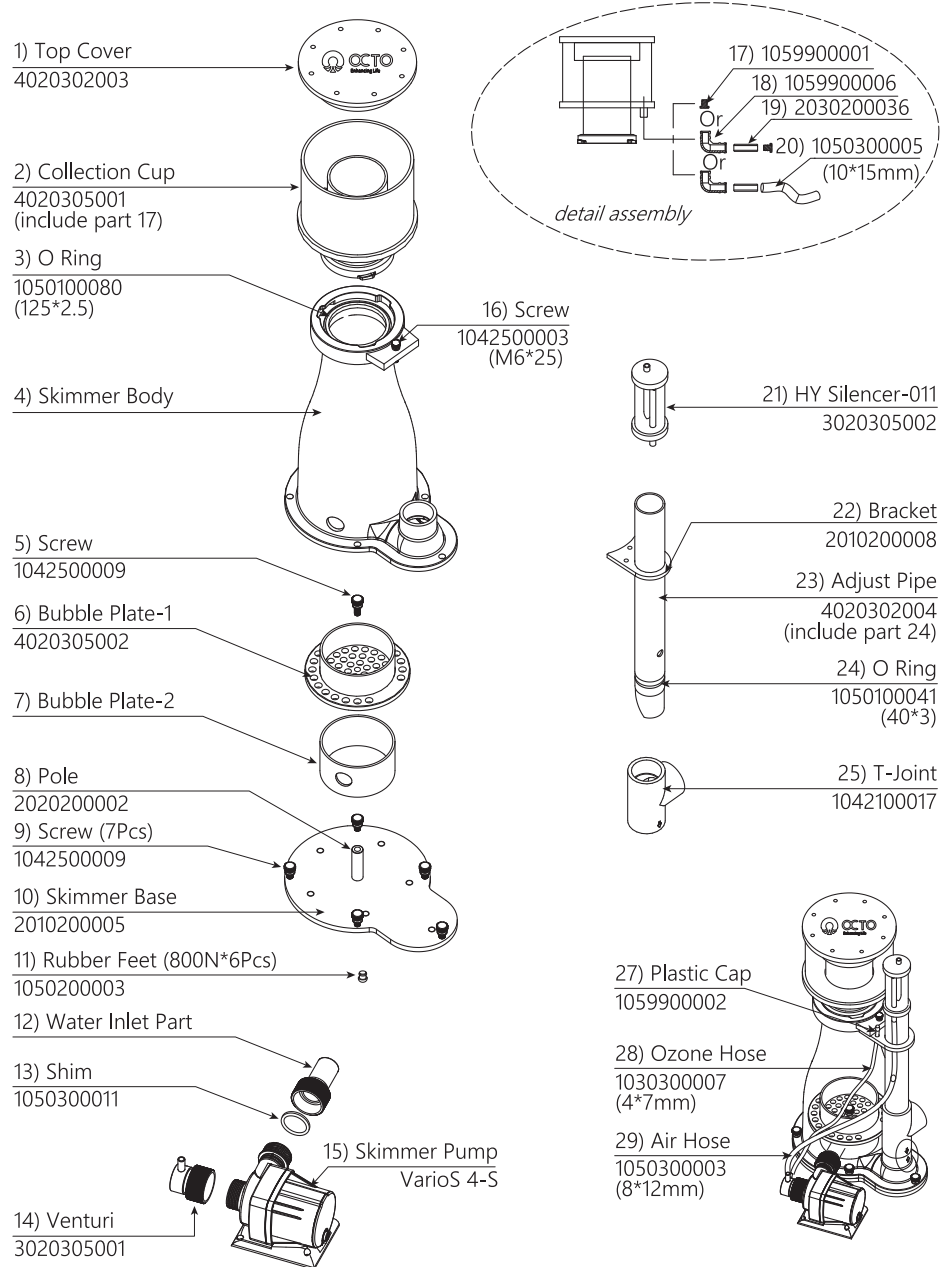
Explosion Chart for Elite 220-S



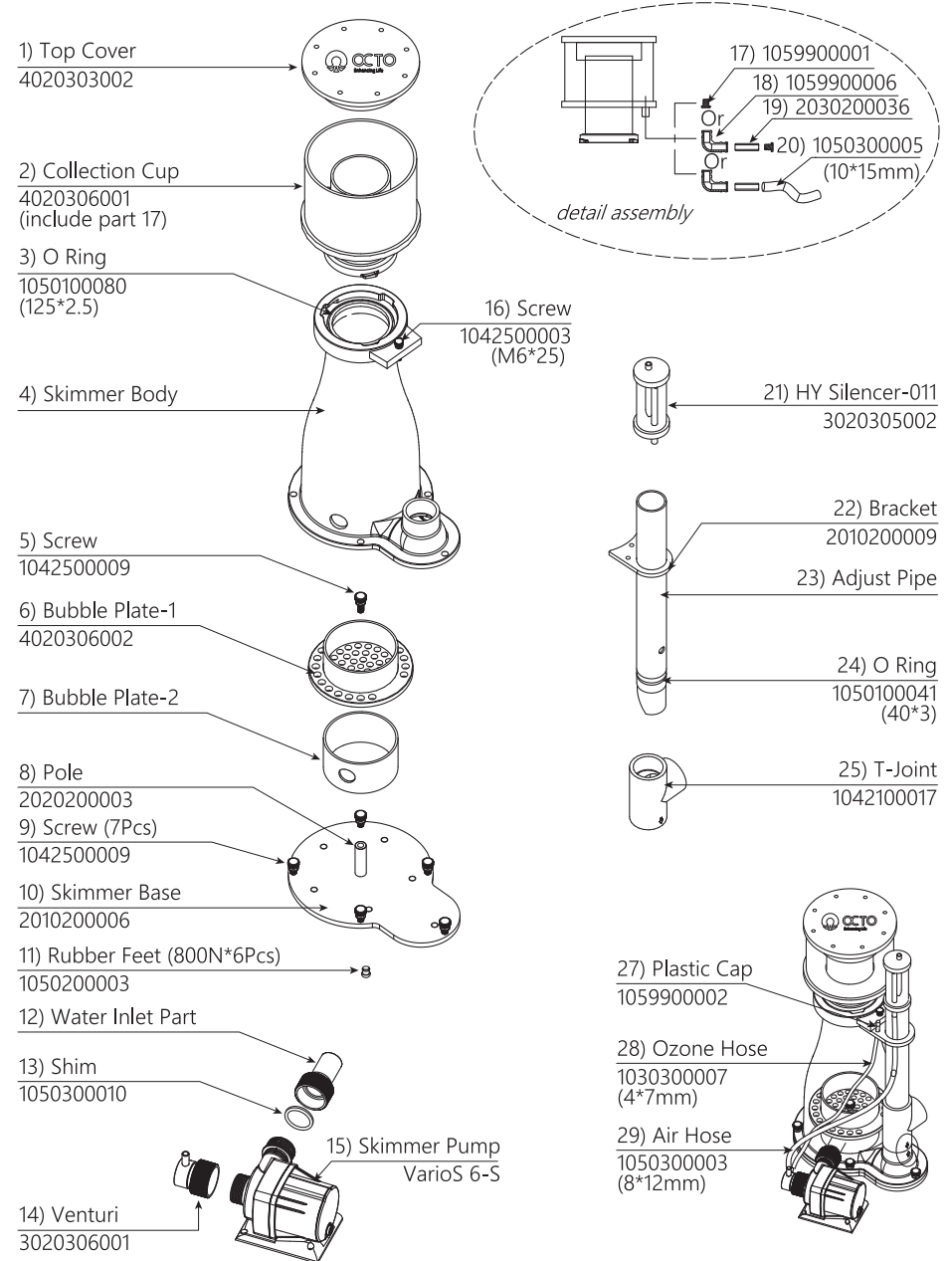
Explosion Chart for Elite 150-INT



Explosion Chart for Elite 200-INT



Explosion Chart for Elite 220-INT



Installation

- Remove the skimmer body and all the assembly parts. Please refer to the checklist.
- Install the product as shown.
- Put the skimmer in sump, power on. Turning the adjust pipe to adjust the water level.
- Recommended sump water level:

Elite-S:

At 180-200mm(7-7.9") for Elite 150-S (VarioS 2-S)

At 200-220mm(7.9-8.7") for Elite 200-S (VarioS 4-S)

At 200-220mm(7.9-8.7") for Elite 220-S (VarioS 6-S)

Elite-INT:

At 180-200mm(7-7.9") for Elite 150-INT (VarioS 2-S)

At 200-220mm(7.9-8.7") for Elite 200-INT (VarioS 4-S)

At 200-220mm(7.9-8.7") for Elite 220-INT (VarioS 6-S)

Watch our unboxing video <https://youtu.be/WEXv11x4W5o> or scan



Watch our unboxing video <https://youtu.be/ilaeWluzoII> or scan



Maintenance

- Collection Cup: Collection Cup should be cleaned at least once every 7-10 days, depending on the organic waste collected.
- Skimmer body: It is recommended that you clean the Skimmer Body once every 3-6 months. Clean and rinse off with fresh water only.
- Silencer: It is recommended to clean the silencer once every 2-3 months to prevent blockage.
- Pump: It is recommended to clean the Pump once every 3-6 months. Check and Clean the Impeller and pump chamber. If necessary, soak the Pump and Impeller in White Vinegar to dissolve stubborn calcium deposits.

Safety Tips

- Always unplug the pump before maintenance.
- Never run the pump dry.
- Do not touch the Socket with wet hands.
- Do not clean the Skimmer with any cleaning agents.

Warranty

Please refer to the below URL:

<https://reefoctopus.com/services/warranty/>

HONYA CO., LTD is committed to continuous product development, we hereby reserve the right to revise the product specifications or designs without prior notice. For any further enquiry/assistance and latest product updates, Please Visit at www.reefoctopus.com.

产品规格

产品编码	产品型号	匹配蛋分泵	功率	杯子直径	产品占地		产品高度		出水管尺寸	最大适合缸	建议沉水深度
			W	mm	mm	mm	mm	mm	L	cm	
120301	Elite 150-S	VarioS 2-S	25	150	265	195	535	Φ 40mm	800	18-20	
120302	Elite 200-S	VarioS 4-S	40	200	325	255	600	Φ 50mm	1500	20-22	
120303	Elite 220-S	VarioS 6-S	70	220	345	285	640	Φ 50mm	2000	20-22	
120304	Elite 150-INT	VarioS 2-S	25	150	290	265	525	Φ 40mm	800	18-20	
120305	Elite 200-INT	VarioS 4-S	40	200	380	285	590	Φ 50mm	1500	20-22	
120306	Elite 220-INT	VarioS 6-S	70	220	420	310	630	Φ 50mm	2000	20-22	

维护

- 收集杯：建议每周至少清洗一次杯子；收集杯容易堆积污泥，会影响泡沫的爬升。
- 蛋分主体：建议每3到6个月对反应仓和出水管进行一次全面清洗。
- 消音器：建议每2到3个月清洗一次，以免堵塞，影响蛋分正常的使用（如果当地空气质量差，可清洗频率高一些）。
- 水泵：建议每三个月对水泵进行一次全面清洗；如有必要，可以使用白醋浸泡水泵和转子，清除钙沉淀。

注意事项

- 检查泵的电压频率是否匹配当地的电网。
- 禁止蛋分泵干转。
- 手带水的情况下，不要触碰电源插头。
- 不要使用任何化学试剂清洗蛋分。

制造商：深圳市泓亚水族设备制造有限公司

泓亚公司致力于持续的产品开发，我们将保留修改产品规格或设计的权利，恕不另行通知。

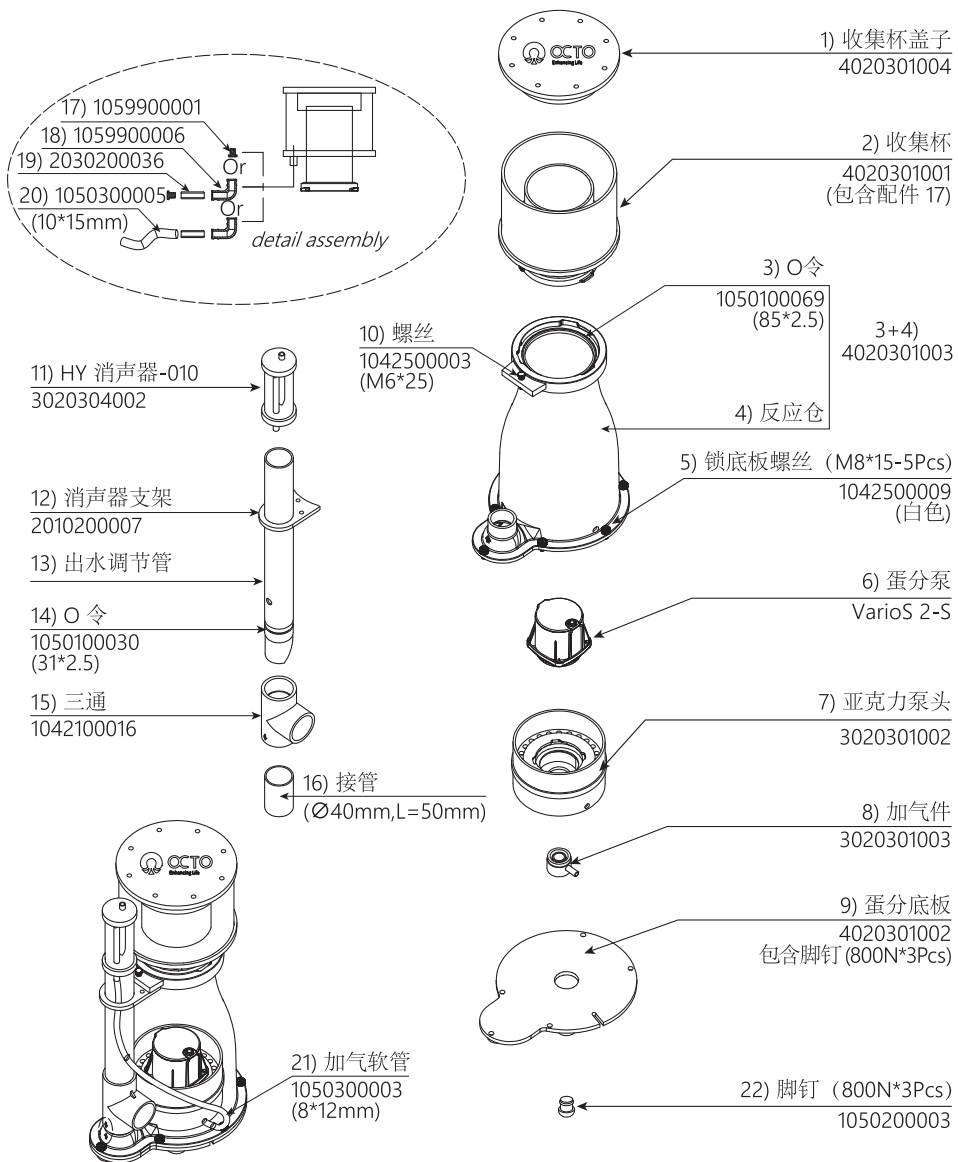


ELITE 150-S **ELITE 150-INT**
ELITE 200-S **ELITE 200-INT**
ELITE 220-S **ELITE 220-INT**

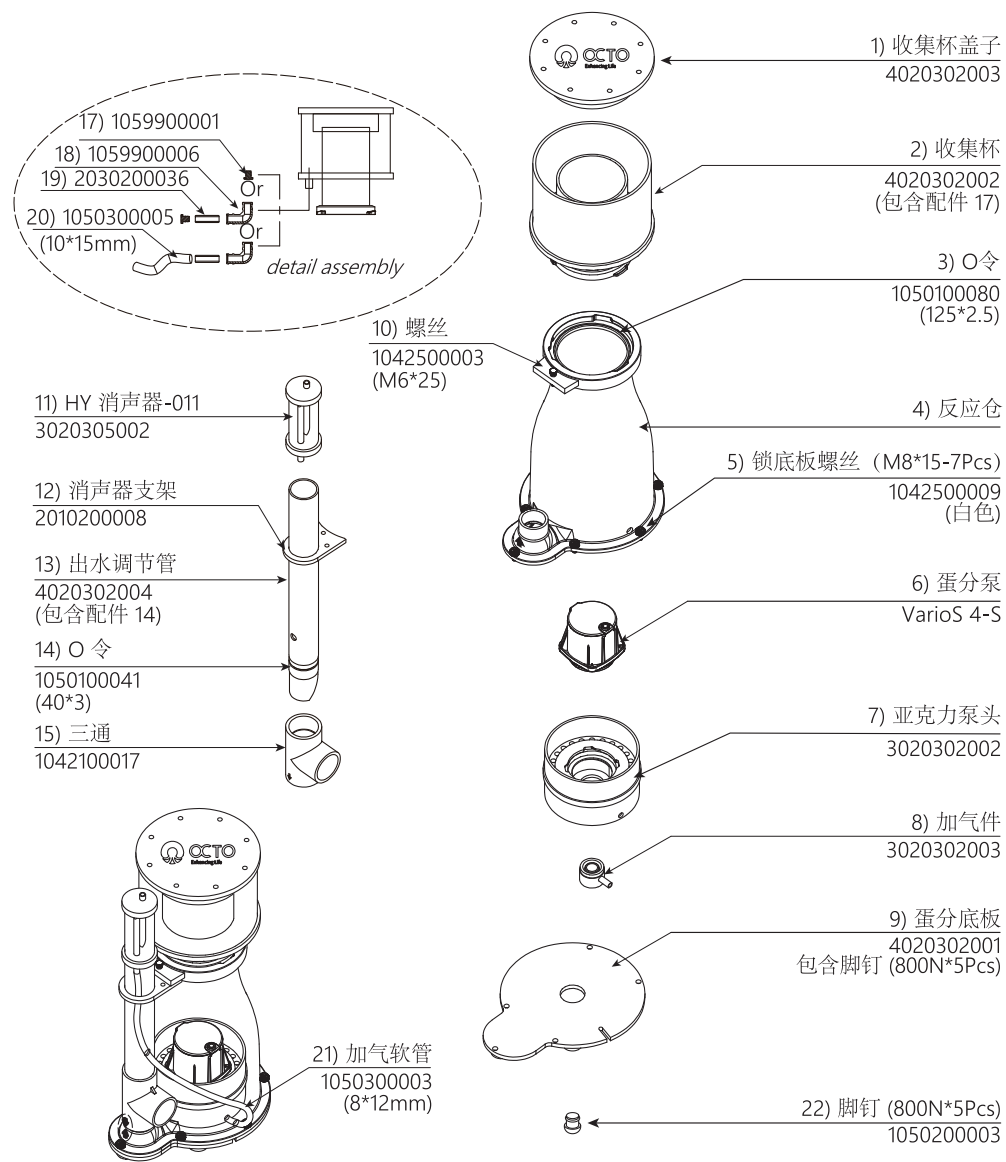
产品说明书



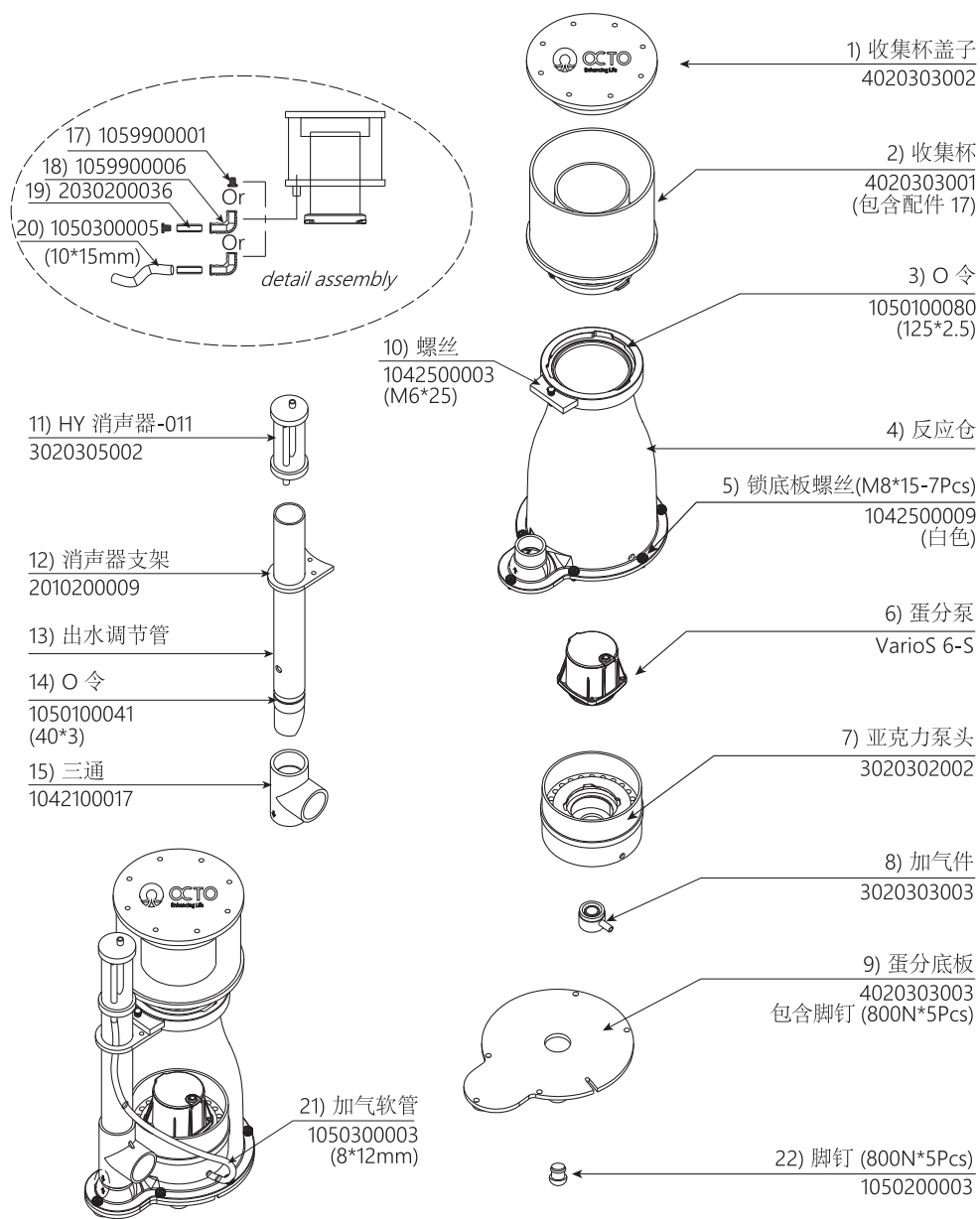
产品总装图-Elite 150-S



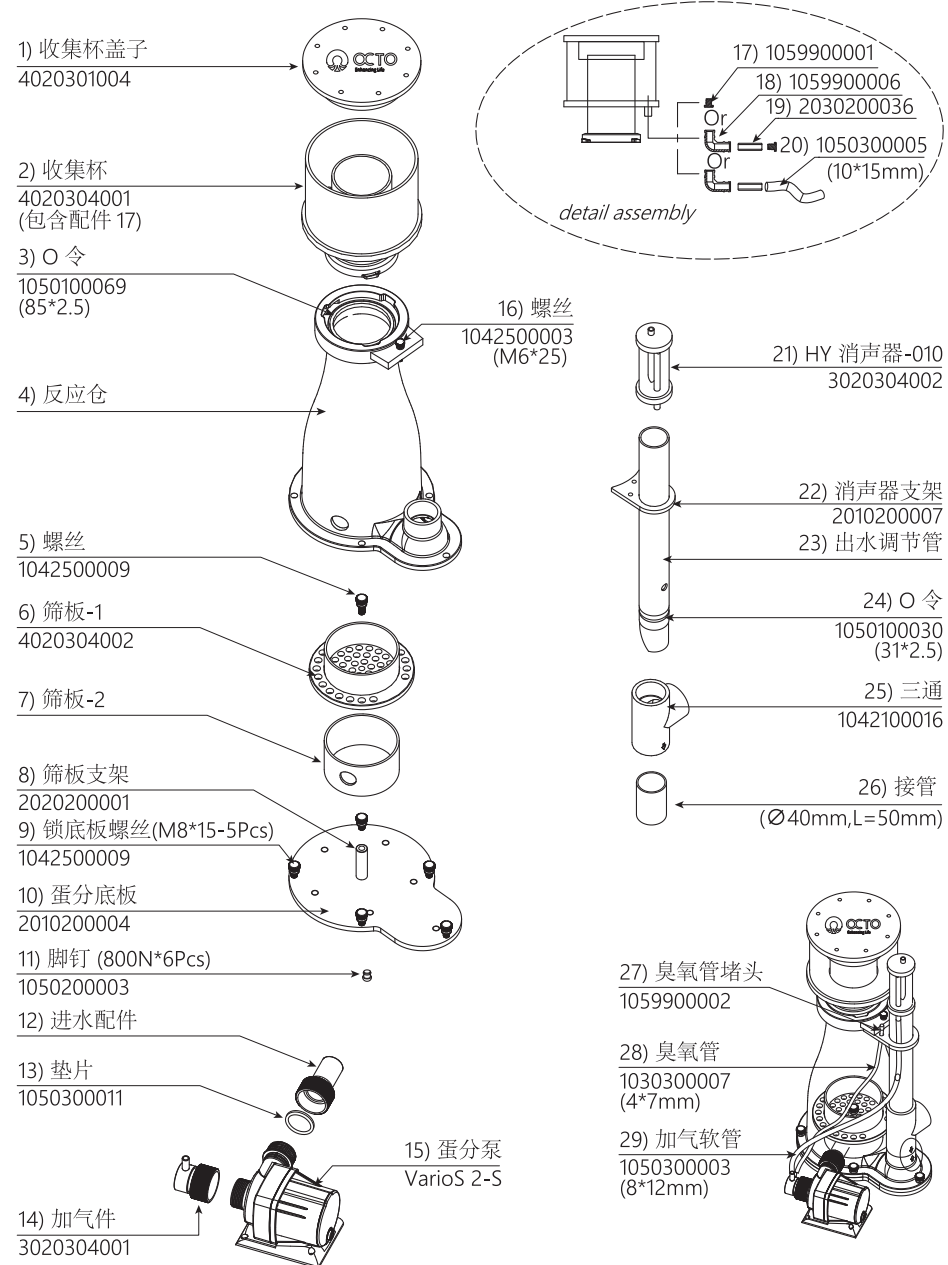
产品总装图-Elite 200-S



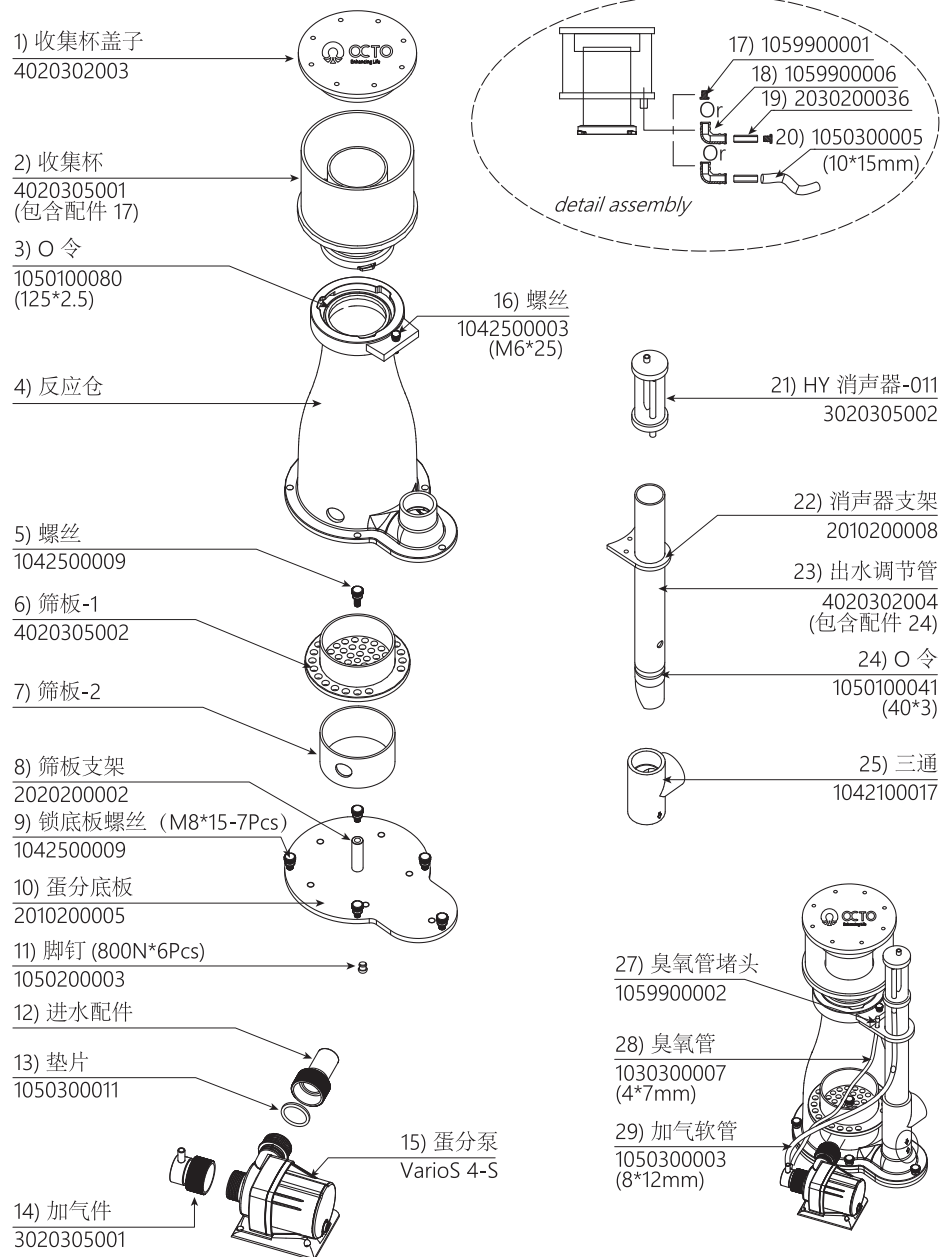
产品总装图-Elite 220-S



产品总装图-Elite 150-INT



产品总装图-Elite 200-INT



产品总装图-Elite 220-INT

